

Important Notice

Wordsworth Pinboard - Messages/Dates for your Calendar

VOLUNTEER

We are looking for a parent volunteer to join us on a small committee to support our work on improving play for the children at lunchtime.

Your main role would be to support us in getting the community, including our parents, on board to gather the resources we will need.

If you are interested in children's play and think you could support us, please see Mrs Palfrey or email info@wordsworthprimary.co.uk with your contact details.

Our School Rules

1. Make safe choices
2. Respect each other
3. Follow instructions
4. Look after our school
5. Reflect and repair

Early Years Parents Evening

Year R will be holding their Parents Evenings on Tuesday 21st November and Thursday 23rd November. These will be face to face meetings and bookable via your child's MCAS account. The timings will be from 3.30pm to 6.30pm and each appointment will be for 10 mins.

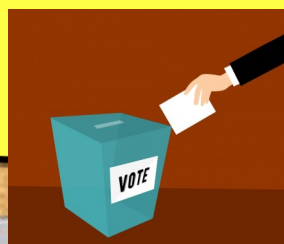
Please could you ensure you only book one slot to allow as many parents to book a time as possible. If you have more than one child here, you will need to click on their account and book parents evening appointments individually.

If you require a link to be able to create a password for MCAS, please email Mrs Evans on debbie.evans@wordsworthprimary.co.uk and ensure that you click on the link within 4 hours of it being sent to your email address otherwise it will expire.

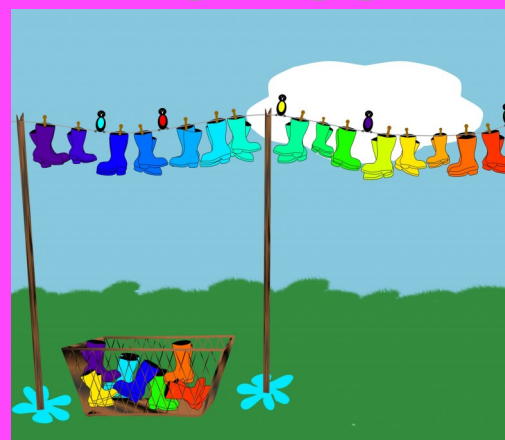
Parent Governor Election Reminder

As per the letter that was sent out on Thursday 9th November, you have until 12 noon on Wednesday 15th November 2023 to cast your vote for the Parent Governor Election.

Any votes returned after this time will not be counted.



Wellies!



As we go into winter we would like to provide a bank of wellies for children to borrow at lunchtime to stop their trainers getting wet. If you have any to donate please send them in to the office. Thank you.

PARENTS
PLEASE JOIN US
For a Year 6 Reading Lesson



6H, 6J, 6L, 6B



Monday 20th November 2023



8.40am for Tea and Coffee

without feeding

Year 6 children would love to invite their parents in to one of their Reading lessons to help support them at home with reading and the transition to secondary school; tea and coffee will be provided for adults from 8.40am onwards in our new library. We look forward to seeing you all. Please note if you can't attend for an hour we will be running further sessions for parents to attend.

Important Notice

Wordsworth Pinboard - Messages/Dates for your Calendar



Friday 17th November

Children can wear something spotty or stripey and bring in a donation for charity if they would like to.



Italian

Italian is a Romance language. The most spoken Romance languages, also referred to as Latin languages, are Spanish, Portuguese, French, Italian and Romanian.

In our school, there are 3 children whose first language is Italian. This week, we have been learning how to say Good morning and Goodbye in Italian.

Facts about the Italian language:

63 million people speak Italian
Italian is an official language in 4 countries
Italian is the fourth most studied language in the world

Famous people who speak Italian:

- Shakira
- Colin Firth

VACANCY

Shirley Infant School

There is a vacancy at Shirley Infant School. If you think you would be interested in applying, please click the link for more information. <https://www.hamwic.org/vacancies/teaching-assistant-shirley-infant-school/>



The school will be closed to children on Tuesday 14th November for INSET day.

On Monday 13th November, we are celebrating 'Odd Socks Day' at school.



We will be using resources, taking part in activities and will be holding assemblies to spread awareness of anti-bullying week and support pupils in understanding what bullying is.

Monday 13th November
during Anti-Bullying Week 2023

Odd Socks Day

9.30am

Don't miss
the
Deadline

A gentle reminder to all parents that if your child is going to be absent from school, that we need to be notified by 9.30am at the latest.

If we do not receive a response from our truancy message, we may complete a home visit. Voicemails can be left on our absence option on our phone line, which is open for messages to be left 24/7.

Thank you for your support in this.

Home Farm

Year 4 Residential to Home Farm will be split into 2 dates:

18th - 20th March 2024 and 25th - 27th March 2024.

At Home Farm, mornings start with breakfast, followed by caring for animals, collecting eggs, or gardening. We also take advantage of the close proximity to museums at Bucklers Hard and Beaulieu, the riverside, New Forest more widely and the beach.

If you are interested in your child having a place on the Year 4 residential to Home Farm, please speak to your child's teacher. The full amount of this residential needs to be paid before your child attends and by Thursday 29th February 2024.

Important Notice

Wordsworth Pinboard - Messages/Dates for your Calendar

Winter Celebration Assemblies

Tuesday 5th December

Nursery Winter Celebration Assembly: 9.15am and 1.15pm

Thursday 7th December

Year 1 Winter Celebration Assembly: 9.15am

Friday 8th December

Year R Nativity: 9.15am

Monday 11th December

Year 2 Winter Celebration Assembly: 9.15am

Year 3 Winter Celebration Assembly: 10.30am

Year 4 Winter Celebration Assembly: 2.15pm

Tuesday 12th December

Xmas dinner and winter craft day—KS2

Wednesday 13th December

Xmas dinner and winter craft day—KS1

Thursday 14th December

Year 6 Winter Celebration Assembly: 9.15am

Year 5 Winter Celebration Assembly: 2.15pm



BULB PLANTING TRAIL AND LITTER PICK
Saturday 11 November 2023 - 1pm to 3pm
An event run by the Friends of St. James' Park with bulbs donated from the Solent Rotary Club.

- ✓ Crocus Bulbs to be planted by the stone stairs
- ✓ Fun Trail with prizes for completed form
- ✓ Litterpick for kids and adults - all equipment provided except gloves

ST. JAMES' PARK, CHURCH STREET, SO15 5SD

Logos: F&SIP, Southampton City Council, Solent Rotary Club, and others.



Dear parents and carers,

Free performance by Southampton University Symphony Orchestra at Turner Sims on Wednesday 15 November at 7pm.

The Southampton University Symphony Orchestra and Turner Sims would like to invite you to a **free** performance of Benjamin Britten's exciting 'Young Persons' Guide to the Orchestra'!

Young Persons' Guide was written to be performed to young people and showcases every instrument in the orchestra in a solo. This performance is perfect for local families and would be an ideal opportunity for young people learning an instrument, or who are interested in learning an instrument, or anyone of any age looking for a fun evening out! We're aiming to introduce as many young people to the amazing world of orchestral music as we can.

The performance will be on the 15th November at 7pm at the Turner Sims Concert Hall on the university campus in Highfield and will last about an hour.

If you would like to book tickets you can find them on the Turner Sims website - turnersims.co.uk - or scan the QR code below.

You will need to use the promo code **OR23** before you are able to book your seats



Under 18s must be accompanied by an adult. **Free parking** is available in all University car parks after 5pm on weekdays. Details for other modes of transport can be found on the Turner Sims Website.