

Important Notice

Wordsworth Pinboard - Messages/Dates for your Calendar

Wordsworth Behaviour Policy, Rewards and Consequences

A letter was sent out on Tuesday regarding our updated Behaviour Policy, along with our rewards and consequences. You can find this [here](#). If you would like to see our Rewards and Consequences, you can click on the links below:

[Rewards](#)
[Consequences](#)

Our children have also been working hard to earn their Trust Tokens. They can earn these by being quiet around the school when transitioning between classrooms .



After half term Mrs Chandler will be starting an exciting new role at Southlands Residential Special School, where she will be a Senior Teaching Assistant training others and developing ELSA and PSHE provision. Mrs Chandler has had a huge impact on the positive wellbeing of so many of our children over the last seven and a half years at Wordsworth and will be sorely missed. Mrs Groves will be taking over from Mrs Chandler to support the children in 4R.

Mrs Chandler's last day will be next Friday 26th May. We know you will join us in thanking her for all her hard work and dedication and wishing her well on her next adventure.



Concerts for children who learn instruments in school

Thursday 6th July - for instrument learners in Y2, Y3 and Y4 (Violin, Viola, Cello, Woodwind and Brass) at 1.45pm in the School Hall.

Concerts for children who learn instruments in school

Thursday 13th July - for instrument learners in Y5 and Y6 (Violin, Viola, Cello, Woodwind and Brass) and school orchestra at 1.45pm in the School Hall.



The deadline for placing class photo orders through Frasers is **Friday 16th June**. This is to enable them to be able to get the orders out before the end of term.



Year 1

Back in April we sent you a letter regarding Year 1 trying different fruits in order to design and make their own smoothies. On Monday 22nd May, Year 1 will be making these smoothies. Any concerns, please do speak to your child's teacher.

Minstead Residential

Minstead Parents Meeting is on Monday 22nd May 3:30pm-4:00pm in the Gallery.

A reminder that the balance for Minstead is due on Friday 9th June. Please could you ensure you pay this via your child's MCAS account. As you have already made a deposit payment, you will have to go to Outstanding Payments in order to pay any more money towards it. If you need assistance with your MCAS account, please do let the school office know. Please also ensure your completed medical paperwork has been sent in by Friday 19th May.

Important Notice

Wordsworth Pinboard - Messages/Dates for your Calendar



Play Worker Required for North Baddesley Kidz Club

Monday & Friday

Term Time Only

7.30am – 9.00am

3.00pm – 6.00pm

Play Worker required at our Breakfast & After School Club located at North Baddesley Junior School.

*Preferred Qualification of NVQ Level 2 or 3 in Childcare but
not essential as training will be given.*

This position would be ideal for a school leaver or parent looking for term time hours.

To work closely with the Club Supervisor, providing play
opportunities for children aged 7–11 years.

Term Time Only

Immediate Start

For more information please contact Leah

Tel. 07468 482518

Holiday Activity and Food Programme

The programme offers valuable support to families on lower incomes, giving them the opportunity to access rewarding and active activities alongside healthy meals over the school holidays.

Following the success for the programme in Southampton in 2021 we are delighted to have been awarded funding to run the programme for the next three years in the city.

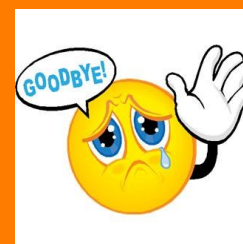
We welcome, understand and value all applicants with additional needs. We recognise that the needs of these children across the city vary, and that is why we aim to meet and provide an inclusive approach within this programme.

Click below for more information and to register:

<https://www.southampton.gov.uk/schools-learning/support-education/haf/>



We have a lot of lost property! Each afternoon we will be putting out the lost property at the side of the school building. Please could you ensure you are checking the items. Any uncollected clothing remaining at the end of this term will be donated to charity shops or used for spares.



Mrs Barwell's last day will be next Wednesday 24th May. Miss Harvey will be taking over from her until the a new Deputy Head is appointed.

**SAVE
THE
DATE**

SPORTS DAY!

Sports Days this year will be held on two separate days for each Key Stage.

Tuesday 23rd May – Years 3, 4, 5 & 6

Thursday 25th May – Years R, 1 & 2

A letter was emailed out this week, you can be reminded of this letter [here](#).

Important Notice

Wordsworth Pinboard - Messages/Dates for your Calendar

IMPORTANT NOTICE!



Leave of Absence Forms need to be obtained from the school office, completed and returned 2 weeks prior to your requested dates.

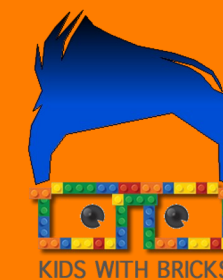
It is important that we know where every child is when they are absent from school.



New Intake 2023

Welcome Year R Parents of 2023, we are in the process of collating your welcome packs and you will be receiving your registration forms and additional information within the next week.

Please ensure all registration forms are returned to our school office along with the original birth certificate by Friday 6th June.



We are excited to be able to offer our Kids With Bricks after school club running from 3.30pm - 4.30pm every Monday and Wednesday for 5 weeks. The Monday session starts on 12th June and the Wednesday session starts on 14th June 2023. The Monday club is open for years 1 & 2 and Wednesdays club is open for Years 3, 4, 5 & 6 and both are online to be booked now. We will send out letters on Monday confirming these new dates. Their website if you would like to check them out or for future bookings is: www.kidswithbricks.com