

## Important Notice



Welcome to our Wordsworth Pinboard!

This is where we will let you know about forthcoming dates for your diary and events happening in the school. We will be emailing this out every Friday.

We also have a Facebook Page where we celebrate achievements; please click [here](#) and give us a follow!

Please note that we will still email you directly if something is happening that requires your action, a date change or cancellation.

## Wordsworth Pinboard - Messages/Dates for your Calendar

### Half Term!

School is closed from  
**Monday 13th - Friday 17th February.**  
Have a super week and we look forward  
to seeing the children again on  
**Monday 20th February!**



#### Reminder about Pre-Ordering on SchoolGrid

Please could Parents/Guardians ensure their children are aware of what has been ordered for them, as some children are getting to the counter at lunchtime and getting upset at the choice their adult has made for them. Unfortunately the kitchen is unable to supply an alternative choice if the child doesn't like what they have.



The Year 3 children are going to be performing a short Recorder Concert on Friday 24th March from 2.30pm—3pm in the school hall. All children will be involved in the concert and one family member can attend (plus any babies/pre-schoolers).



Culture Vulture

#### FOR THOSE EARLY BIRDS...

Culture Vulture, run by Southampton City Council, have released their February Half Term activities and they are ready to be booked. Find out what's on by clicking [here](#)



#### Change in Menu after Half Term:

In response to comments from parents/carers raised with Dolce, they will be implementing a change to the current menu from Monday 20th February (after Half Term).

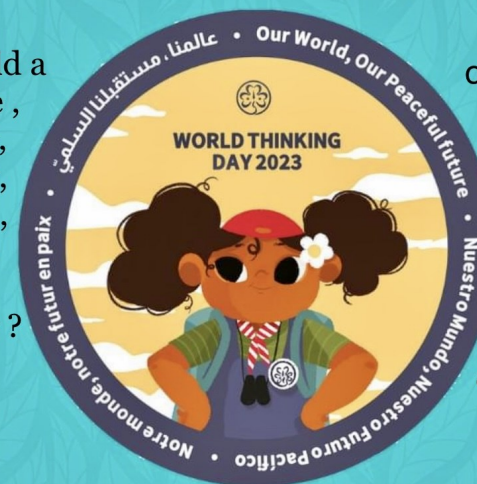
When you order a meal that contains meat, another box will pop up giving a Halal and non Halal option.

The implementation of this change will unfortunately override existing orders from 20th February onwards. If you have already preordered that far ahead, you will need to reorder.

Any queries, please give Dolce a call on tel: 01942 707709 or email them on [customercare@dolce.co.uk](mailto:customercare@dolce.co.uk)

### World Thinking Day 22 February 2023

Is your child a  
girl guide,  
brownie,  
rainbow,  
squirrel,  
beaver,  
scout  
or ranger?



We invite them to come to school on this special day and share how proud they are to be part of the guiding and scouting movement with their classes.



## Wordsworth Pinboard - Messages/Dates for your Calendar

### Important Notice

#### Survey about sport & physical activity for children & young people

We have sent out letters to parents of classes 1ML, 3P and 5L about an online Active Lives survey that we wish the children to complete. The classes have preselected. Please read the letter for more information about the survey.

The teacher will set aside time for the pupils to complete the survey; if you do not want your child to participate then please let your child's teacher know.

For a minimum of 30 surveys completed, we will receive credits to spend towards some sports equipment.

#### YEAR R LITTLE WANDLE PHONICS PARENT MEETING

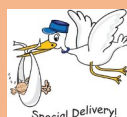
The meeting will be held in school on Wednesday 1st March at both 9am and 5pm. We will introduce you to the Little Wandle scheme, how we teach it in class and explain how you can support your child at home.

If you attend the 9am meeting, you will then be able to visit your child in their classroom and read their reading book with them.



#### YEAR 3 - SCIENCE DOME MONDAY 20TH FEBRUARY

Voluntary contributions can still be made via your MCAS app. Whilst it is not expected that you contribute, if enough support is not received for this visit, it will need to be cancelled.



#### Baby News!

Mrs Long is expecting a baby!

Her planned last day with 1ML will be Wednesday 19th April; Mrs Matthews will be taking over teaching full time so there will be no disruption to the children's learning.

We hope you will join us in congratulating Mrs Long and her family.



University of  
Southampton

Pupil Voice Letters have been emailed out to Years R, 4 & 5. If you do not want your child participating in the survey, then please opt them out by emailing [info@wordsworthprimary.co.uk](mailto:info@wordsworthprimary.co.uk) by Monday 20th February. If you are happy with your child participating then you do not need to do anything. You can remind yourself of the letter by clicking [here](#).



#### Music Lessons

Please ensure you make the next instalment and clear any arrears via the MCAS app, if you haven't already. It will be under outstanding payments. If you are experiencing difficulties paying, then please let us know.



For safety reasons, please could we ask parents/guardians not to let their children play games or ride bikes/scooters on the playground at picking up time. We have lots of small children around and they could get injured.



In partnership with the ecology team, the Southampton National Park Scheme have launched a hedgehog champion scheme for young people in Southampton:

<https://southampton-national-park.com/hedgehog-champions/>