

Important Notice



Welcome to our Wordsworth Pinboard!

This is where we will let you know about forthcoming dates for your diary and events happening in the school. We will be emailing this out every Friday.

We also have a Facebook Page where we celebrate achievements; please click [here](#) and give us a follow!

Please note that we will still email you directly if something is happening that requires your action, a date change or cancellation.



Change in Menu after Half Term:

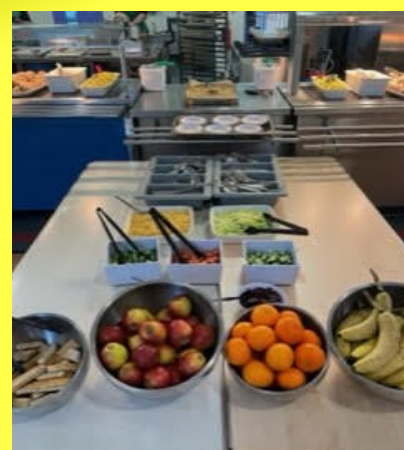
In response to comments from parents/carers raised with Dolce, they will be implementing a change to the current menu from Monday 20th February (after Half Term).

When you order a meal that contains meat, another box will pop up giving a Halal and non Halal option.

The implementation of this change will unfortunately override existing orders from 20th February onwards. If you have already preordered that far ahead, you will need to reorder.

Any queries, please do give Dolce a call on tel: 01942 707709 or email them on customercare@dolce.co.uk

Wordsworth Pinboard - Messages/Dates for your Calendar



Just an example of some of the delicious food that our children had for their lunches on Monday, provided by catering company Dolce.

The children can also help themselves to extras like salad, bread and yoghurt as well as a choice of pudding. Our older children get the round plates and a healthy side salad always comes with wraps, rolls or sandwiches.

You can preorder your child's meal on Schoolgrid to save time for them in the morning. If you need a SchoolGrid login, please do get in touch.



Important Notice

Wordsworth Pinboard - Messages/Dates for

Year R



Please can I remind all parents and carers not to come into the classrooms in the morning. This is a safeguarding issue as we have children arriving, and must ensure we have their safety as our priority.

If you need to speak to the teacher, then please leave a message to this effect with the TA at the door or message us on Tapestry to arrange a meeting or speak to a teacher after school.

Ideally parents and carers should be dropping off at the gate unless something has been confirmed with the class teacher.

Clare Workman
EYFS Phase Leader

A reminder that next week we have the last two sessions of Open Doors - a chance for parents/guardians to come into the school and view their child's work (this is not a Parents Evening):

- Y5 Monday 23rd Jan 3pm
- Y6 Tuesday 24th Jan 3pm

Year 2 Residential to Minstead

Don't forget to register your interest; letters were sent home this week.

Year 4 Residential to Home Farm

There are spaces still available. Please speak to Mr Jenkinson if you are interested.

We said a fond farewell to Mr Durham last Wednesday and we would like to wish him all the best for the future as he takes on a new challenge.

Notification of Industrial Action during February and March 2023

Please see letter regarding this that was emailed out today.

You can also view this letter under News and Events on our website by clicking [here](#).

CLOSED

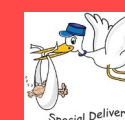
There are two INSET days in January:

- Friday 27th January
- Monday 30th January 2023



Music Lessons

A reminder that the next instalment for music lessons was due Friday 13th January. Please ensure you make the next instalment and clear any arrears via the MCAS app. It will be under outstanding Payments.



Baby News!

Mrs Long is expecting a baby!

Her planned last day with 1ML will be Wednesday 19th April; Mrs Matthews will be taking over teaching full time so there will be no disruption to the children's learning.

We hope you will join us in congratulating Mrs Long and her family.

Important Notice

Wordsworth Pinboard - Messages/Dates for your Calendar

Dear Parents/Carers,

You might be interested in taking your child to watch this concert, performed by young Southampton musicians aged 7 - 18. We have some players in Acorn Strings and Elgar Strings who will be taking part in the concert, and it is always a fantastic evening to see the range of instruments that play in an orchestra.

Tickets are £2 for children and there is a family ticket offer.

Mrs A Thompsett (Music Teacher)



Southampton Music Hub and Friends of the Southampton Youth Orchestras
present their annual

Pyramid Concert

Featuring Acorn Strings, Elgar Strings, Youth Strings, Youth Concert Sinfonia and Youth Orchestra

Saturday 28 January
7.00pm

at Central Hall
St Mary Street, Southampton, SO14 1NF

Tickets:
£12 adults, £8 concessions, £2 under 16s
£25 Family ticket - 2 adults and 2 children
Box Office:
Available on the door on the day

southamptonmusicshub.org
music@southampton.gov.uk023 8083 3648
@musicshubsouth



FOR THOSE EARLY BIRDS...

Culture Vulture, run by Southampton City Council, have released their February Half Term activities and they are ready to be booked. Find out what's on by clicking [here](#)



- Year 3 on Monday will be Tea Tasting little sips of the following:
- Green
 - Ceylon
 - Assam
 - Rooibos

This is in introduction to the Cloud Tea Monkeys text.

On Thursday afternoon they will be creating tectonic plates using biscuits!



Year R

Over the next few weeks the children will be having a very special set of visitors...

The Teddy Bear Hospital will be at school! A team of volunteers will be coming into school to complete a range of activities with the children based around hospitals with the intention of giving children confidence around hospitals and alleviating any worries they may have. They will also be looking at keeping safe and complete some healthy eating activities.

The children have shown a real interest in 'People who help us' and this is a great way for the children to explore the possibilities of jobs surrounding hospitals and medicine! Who knows, it could inspire a future doctor, nurse or surgeon!

Each class will have an afternoon with the team over the next few Wednesday afternoons as follows:

- Wednesday 25th January RW - Peter Rabbits
- Wednesday 1st February- RH - Paddington Bear
- Wednesday 8th February RS – Elmer

Please can we ask that the children bring in a teddy bear or soft toy (not too large!) in A NAMED CARRIER BAG on their given day? We will look after them in the morning to avoid any muddy casualties before the team arrive and then the children can take their teddies with them for the afternoon's activities!