

Art Year 6 Summer 2 Greek Pottery Concept: form

Prior Learning: To create a pot using pinching and pulling as well as coiling. To use tools to mark make into clay.

Learning about Greek Pottery



Greek Pottery is incredibly famous and one of the main reasons that we know so much about Ancient Greek History. Archaeologists have discovered thousands of pots during excavation, some functional and some decorative. Many depicted stories and Greek Myths, or documented famous events such as the Olympic Games.

4. TWAL: to convey a story through imagery.

We will look at how stories are documented in pottery, We will then consider what story we wish to tell on our decorative vase. We will plan and paint this design into our sketchbook in order to see if it will be feasible and effective on our final pot.



1. TWAL: about the legacy of Greek Pottery.

Many Ancient Greek Pots can be seen in museums all over the world. We are going to look during this session at the many styles and patterns found on Greek pots. We will sketch out some of the forms we see, as these will help us when we design our own later on in the term.



Some Ancient Greek pots were functional, meaning they did something useful, but many were decorative, meaning they were just for decoration in someone's home.

5. TWAL: to create a pot using clay, inspired by Ancient Greek Pottery.

We will put all of our learning into action, making a final Greek vase. We will learn methods of joinery in order to attach handles to the side of our vase. It is important to make sure to stick to a traditional colour scheme- you would not see any green or pink on a Greek Vase!



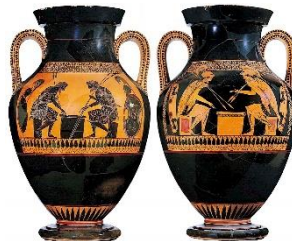
2. TWAL: about the colours used in Ancient Greek Pottery.

We will learn more about the styles of pottery, in particular the difference between Red Figure pottery and Black Figure pottery. We will have a go at painting in both these styles into our books.



We will decide on the style we prefer and wish to use in our own final design.

Greek pottery was commonly terracotta and black. Sometimes white was used sparingly.



6. TWAL: to evaluate our artwork.

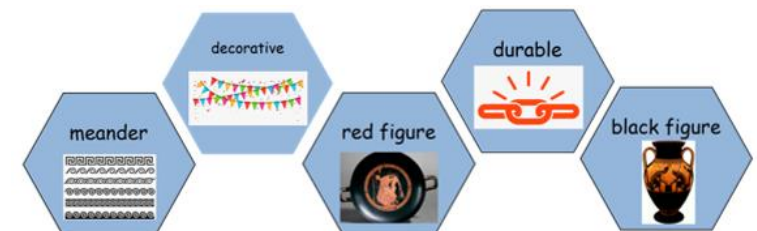
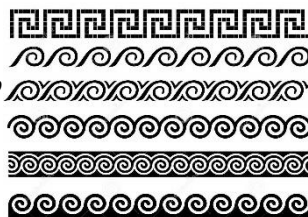
We will evaluate our artwork and decide what we liked, what skills we have learned and what we will improve next time. We will comment on our texture, shape and accuracy.



Great artists can say what they like and what they would do better next time!

3. TWAL: about Greek meanders.

In this lesson we will learn more about Greek meanders. Many people would recognise a Greek meander if they saw it, but not know it was a signature of Greek artwork and architecture. We will have a go at replicating some onto a clay test tile, to see if we wish to incorporate them into our final design.



Words we will know!