



# Wordsworth Primary School Newsletter

**Dear Parents and children,** another busy half term is coming to an end and whilst all schools have faced challenges in terms of sickness, an enormous amount has still been achieved. We are very proud of all of our children for their resilience and efforts this half term. Here are some highlights...

**Year R's** Spring topic was 'Growing' - they have been looking at signs of Spring and what flowers have been growing in the Nature Zone. They enjoyed painting the lovely flowers. They have also been looking at the pond life and watching the tadpoles grow.



**Year 1** have enjoyed learning all about the people responsible for space exploration. They know that Neil Armstrong was the first person to step on the moon but they also researched the people behind the scenes who made it all possible by designing the rockets and doing the 'maths'. The children designed and made their own rockets based on rockets that went to the moon.



**Year 2** have linked their science and DT learning with the text 'Ocean Meets Sky'. They have been investigating the suitability of different materials and have designed and built their own boats fit for purpose. They are excited to test their boats this week!



**Year 3** loved dressing up as passengers, crew members and Captains of the Titanic. Each child experienced first, second and third class activities which included dancing the Waltz, playing board games and the Irish jig! They also used their cutting skills to make sandwiches, wraps and salads which they researched and designed in DT. The class picnic was a particular highlight.



**SPRING TERM**

## Spring 2 2022

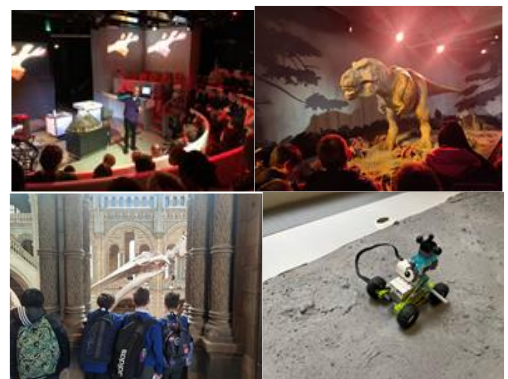


**Year 4** have enjoyed reading the story of 'Varjak Paw' and have been creating some watercolour illustrations to go with the story. They have also stepped back in time to learn about the Stone Age, including where they lived and what they ate.



Huge congratulations to **Rosie-Mei from 4J**, who won the Southampton Cross-Country Championships for Lower KS2 last week!

**Year 5** had a fantastic day in London with a very early start! They enjoyed taking part in activities at the National History Museum such as the Earthquake Experience and Lego WeDo: Mission to Mars. They saw so many amazing exhibits. The favourite was the dinosaur zone, where one dinosaur almost ate Mr Davis!



**Year 6** have really impressed us with their hardworking, mature attitudes during mock week last week - WELL DONE! This term they have been learning all about the heart and circulatory system. They enjoyed making their own 'blood' to help them to understand the way the different components in our blood work to keep our bodies healthy.



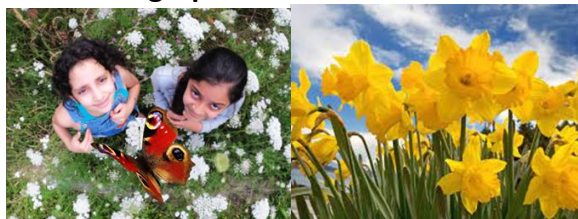
## Coming Soon in Summer 1...

Date	Event	What do children/ parents need to know or do
<b>Monday 2<sup>nd</sup> and Tuesday 3<sup>rd</sup> May</b>	Bank holiday and additional day off school for the Queen's Jubilee. 	Relax and Enjoy! 
<b>Thursday 5<sup>th</sup> May</b>	Official Class Photo day 	Remember to brush your teeth and your hair! Remember your school uniform and your best smile. 😊 
<b>Week beginning May 9<sup>th</sup></b>	Year 6 SATS Week 	Year 6 children are invited to come in early for breakfast to get them in a positive mindset for the day. Please don't worry, we know you will all give it your best. It would be really appreciated if the other children could be mindful and quiet when moving around the school during the mornings this week. 
<b>Tuesday 17<sup>th</sup> and Wednesday 18<sup>th</sup> May (17<sup>th</sup> and 19<sup>th</sup> for 1ML)</b>	Parents Evenings – via telephone 	Remember to book your appointment via your MCAS app. Once you log on, click the Parents Evening link on the menu, select the date from the drop down menu on the top left of the screen and click on the teacher's name to select an available appointment. Please contact the school office if you need help booking an appointment. They are more than happy to help.
<b>National Thank a Teacher Day Thursday 26<sup>th</sup> May</b>	This year we will be thanking <b>all</b> our staff for continuing to go above and beyond during challenging times. 	We do not expect you to do anything specific on this day. However, you are more than welcome to join us in thanking the adults that support you every day in school. 
<b>School celebration of the Jubilee including Family Picnic Friday 27<sup>th</sup> May</b>	We will be officially celebrating the Queen's Jubilee in school on this day- please see flyer attached to this newsletter. 	Children can wear red, white and blue on this day. Families are invited to bring a picnic and join us on the school field from 12-1pm. We will need to sign you in on your arrival. Children can order a school picnic lunch, bring their own or share lunch brought in by families. There will be a collection for the Hamwic Education Trust Foundation on the school gate. 

Please see Year group Curriculum Newsletters for dates relating to specific Year groups.



## Outdoor Learning Update



This half term we have been busy with our Outdoor Learning, enjoying the changes in season and the arrival of Spring. We have certainly seen all weathers in recent weeks too! We are looking forward to more sunshine and growth in the Summer.

**Year 1** have been making and launching rockets. They've also been pond dipping and bug hunting, identifying the features of the creatures!

**Year 2** have been pond dipping too, they have also been planting flowers and learning how to keep them alive.

**Year 3** have been looking at the transportation of water in flowers. They have also been pond dipping and identifying the different creatures found within our Nature Zone.

**Year 4** have been learning about shelter and homes in the Stone Age and creating their own using materials found outside. They have also been looking at the different types of trees and plants we have.

**Year 5** have been looking at air resistance. They made their own devices to protect an egg after dropping it from height. Lots of laughing all round!

**Year 6** have been looking at co-ordinates. They created their own co-ordinate grids and finished off with a game of battleships!



## Wordsworth Spring Event



'Thank you to all who attended our 'Spring EGGstravaganza' on the 1st April. It was so lovely to see the school community come together and the smiles on all the children's faces. Together we have currently raised £277.43, with money still being donated now. All money raised will go back into experiences and opportunities the children of the school may otherwise not have.

We cannot wait to see you all again at '**Wordsworth's Wacky Summer Event' on Friday 1st July** where more fun can be had for all. 😊

### Red Nose Day Collection

Thank you for your contributions to the Red Nose Day gate collection. We raised £139.28

### Summer 1 After School Clubs

#### Monday:

Football – Yr. 1/2/3 -Team Spirit - 3.10 - 4.30pm- (Spaces available)

#### Tuesday:

Gymnastics/Ninja Warrior – Yr. 1-6 Team Spirit- 3.10-4.30pm (Fully booked)

Tennis- Yr. 5/6 – Miss Harvey- 3.30-4.15pm- Starts Week 1- Permission slip needs to be returned.

#### Wednesday:

Team Extreme – Yr. 1-6 -Team Spirit- 3.10-4.30pm (Spaces available)

#### Thursday:

Tennis – Yr. 1-6 -Team Spirit-3.10-4.30pm (Spaces available)

Football- Yr. 6 – Mr Jenkinson/Mr Walsh 3.30-4.30pm- Starts Week 1- Permission slip needs to be returned.

#### Friday:

Girls Football - Team Spirit- Yr. 3- (Spaces available)

Boys Football - Team Spirit- Yr. 4/5/6 (Spaces available)

All Team Spirit clubs start in Week 2 and need to be pre- booked. Team Spirit contact details:  
admin@teamspirit4sport.co.uk  
Tel: 02380658636





## Community Projects...

### Parent Forum

This term has seen the start-up of the Parent Forum.

We are very aware that we can improve our communication with families and we have been working hard on ways we can do this with our Parent Forum.

Thank you to those parents who have given up their time to attend, shared their views and worked closely with Mr Dear to evaluate Wordsworth's current communications. From these meetings a clearer Curriculum letter has been created which will now be sent out before the start of a new term. You should be receiving these this week. We hope that will mean less e-mails and calls going back and forth to clarify dates and times.

The Parent Forum will continue after the Easter Break and will be looking at other areas of communication between the school and the community before moving on to other topics. If you would like to attend this group, you would be more than welcome to join us on Thursdays at 2.30pm. Please email [info@wordsworthprimary.co.uk](mailto:info@wordsworthprimary.co.uk) if you are interested in taking part. Parent Forums will commence again after the holidays from Thursday 12<sup>th</sup> May.

As always we continue to welcome your feedback and queries, thank you for your continued patience and kindness and your understanding that we cannot always respond immediately.

### Landscape Project

As you are aware we are planning a very exciting and major project over the next few years to upgrade all of the outside spaces, to really enhance what we can offer to the children and build some amazing spaces that will be great for socialising, learning, as well as a variety of play and sports.

We have now had our first workshops with some parent volunteers, governors, staff and children. In the workshops we have looked at the spaces we currently have, including what works well and what doesn't work so well and what would we like these spaces in the future to look like and to do. Our school councillors were just brilliant at telling us in great honesty what they liked and didn't like about the school grounds as well as what they would like to see in the future. Some really great ideas came out of these sessions and we have lots of great things to consider.

We are now busy pulling all of these great ideas together and we will share the results with you very soon.



### School Uniform Consultation Update

Thank you to all the parents who took the time to complete the school uniform consultation. We have reviewed all of the responses and taken on board your views.

The majority of parents who responded were open to a change of uniform and happy for it to include a school logo.

With this in mind we are hoping to launch a new logo for Wordsworth to reflect our whole school community. We are therefore opening a competition – children, parents and staff are all invited to submit a logo design for consideration. If you are interested in taking part, please see the flyer attached to this newsletter with the details.

We will be considering carefully the concerns raised about affordability and the children looking smart when we now begin the process of talking to uniform providers. We would like to ensure parents that there will be no expectation to purchase a new uniform when it is launched as it is fine to wait until your child outgrows their current uniform.

### Updated COVID guidelines

Thank you to the parents who have supported us through the turbulent COVID peaks within the year groups, it has been challenging however we seem to have come out the other side. As from Friday 1st April, the government guideline in relation to COVID is as follows:

- Children and young people who are unwell and have a high temperature should stay at home and avoid contact with other people. They can go back to school, college or childcare when they no longer have a high temperature, and they are well enough to attend.

### Notices:

- A gentle reminder that school gates open at 8:40am and close promptly at 8:50am. We feel it is very important for the children to be in on time daily and start the day as soon as possible (with a bagel in hand!)
- **We would like to take this opportunity to wish you a wonderful Easter holiday, full of sunshine and smiles ☺**



# WORDSWORTH PRIMARY SCHOOL LOGO COMPETITION

We have decided we are going to launch a new logo that reflects our whole school community and what we are all about.



designed by freepik

Community, Trust, Nurturing, Learning and Empowerment are all really important to us.

- We are inviting all children, parents and staff to take part in this competition to design our new school logo
- You can use any medium to represent your logo
- Entries must be received in school by 5pm on Friday 29<sup>th</sup> April 2022
- Please let your class teacher know if you need any resources to support you with your design

**GOOD LUCK!**





# WORDSWORTH PRIMARY CELEBRATION OF THE QUEEN'S JUBILEE



**When:** Friday 27<sup>th</sup> May 2022 12-1pm

**Where:** Wordsworth Primary School Field

**What:** Family Picnic

**Dress:** Red, White and Blue Non School Uniform



You are cordially invited to join us on Friday 27<sup>th</sup> May for an alfresco banquet to celebrate her Majesty's Jubilee.

Children can order a special school picnic packed lunch or share a picnic bought in by family.

We very much look forward to seeing everyone looking dapper in our Nations colours.

We will be collecting donations for the Hamwic Education Trust Foundation, to support local families in need.