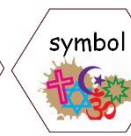


R.E. Year 3 Autumn 1

Prior Learning: understanding of candlelight as a symbol, understanding of Christian faith and beliefs.

Words we will know!



1. Communicate

TWAL: to communicate our ideas about trees as a symbol.

We will describe our own response to trees as symbols.

5. Evaluate

TWAL: to evaluate the importance of trees as a symbol.

We will describe the importance of the tree as a symbol to Muslims by discussing if anything else could have been a symbol in the Three Trees story.

4. Contextualise

TWAL: to contextualise trees as a symbol in the Islamic faith.

We will be able describe how the symbol of a tree is used in Islam after reading *the tale of the three trees* story.

2. Apply

TWAL: to apply our understanding of trees as a symbol.

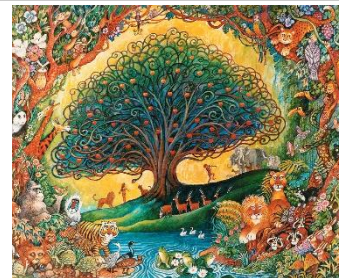
We will describe examples of when the tree symbol is used or is useful.

Theme: trees as a symbol

Concept: Symbol

Why are trees an important symbol?

We will look at trees as a symbol for Christians and Muslims.



The trees in this story are a reminder that there is a plan, even if you don't know what it is.

3. Inquire

TWAL: to inquire about symbols

We will be able to describe what the word symbol means and write our own definition.



A symbol is something, usually an image, that stands for something else.

4. Contextualise

TWAL: to contextualise trees as a symbol in the Christian faith.

We will be able to describe how the symbol of a tree is used in Christianity through reading the garden of Eden story and creating our own tree of knowledge.



People who follow the Jewish, Islamic and Christian faith believe the tree in the Garden of Eden symbolises knowledge.

5. Evaluate

TWAL: to evaluate the importance of trees as a symbol.

We will describe the importance of the tree as a symbol to Christians.